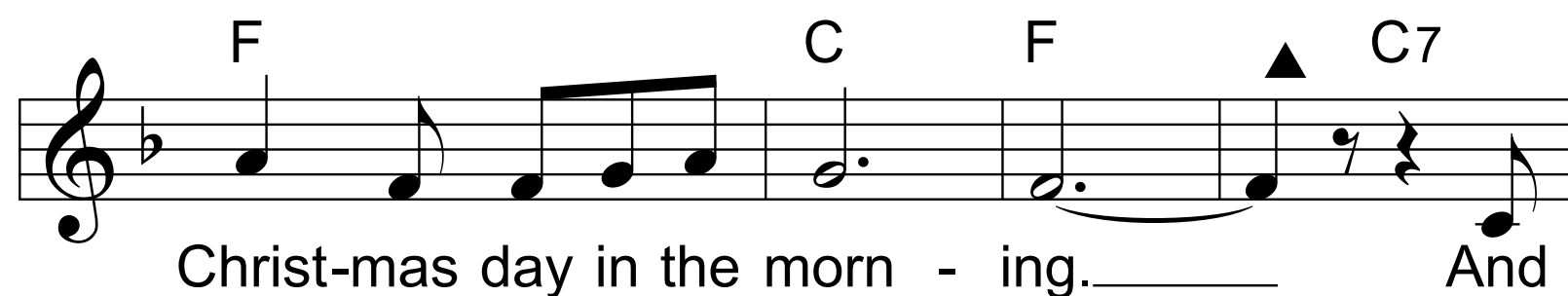
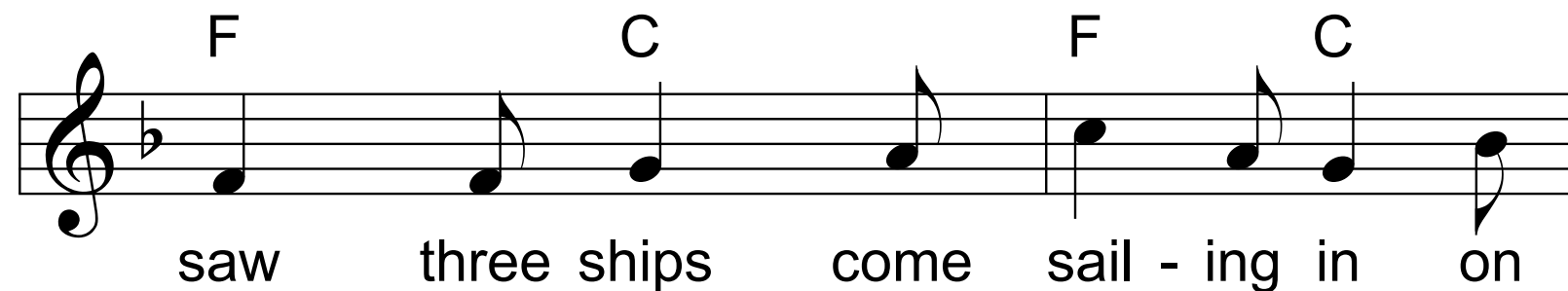
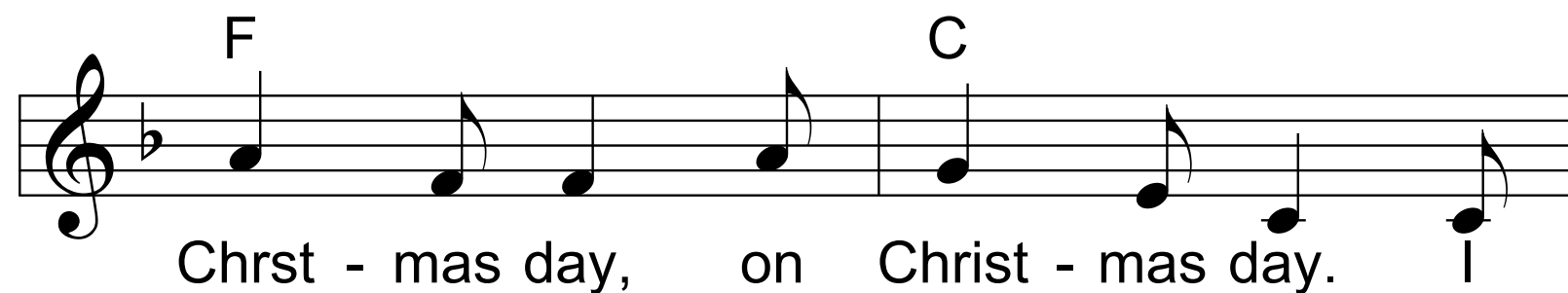
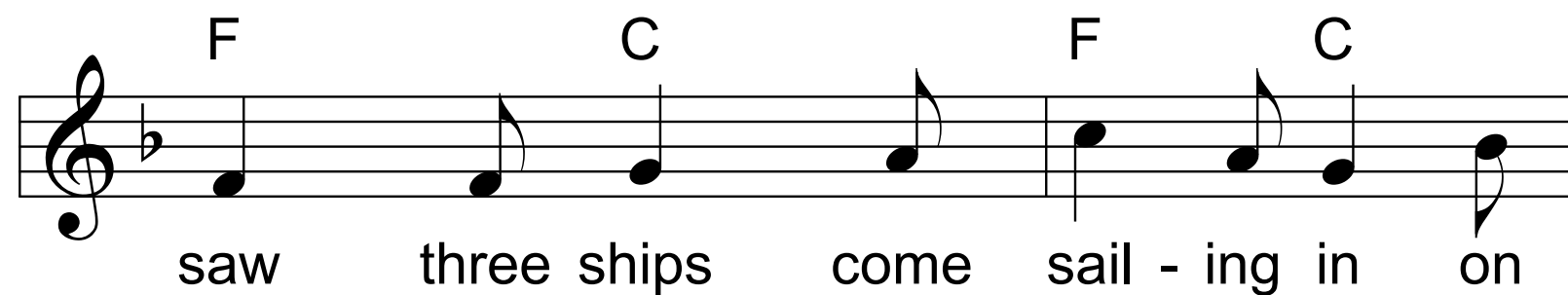
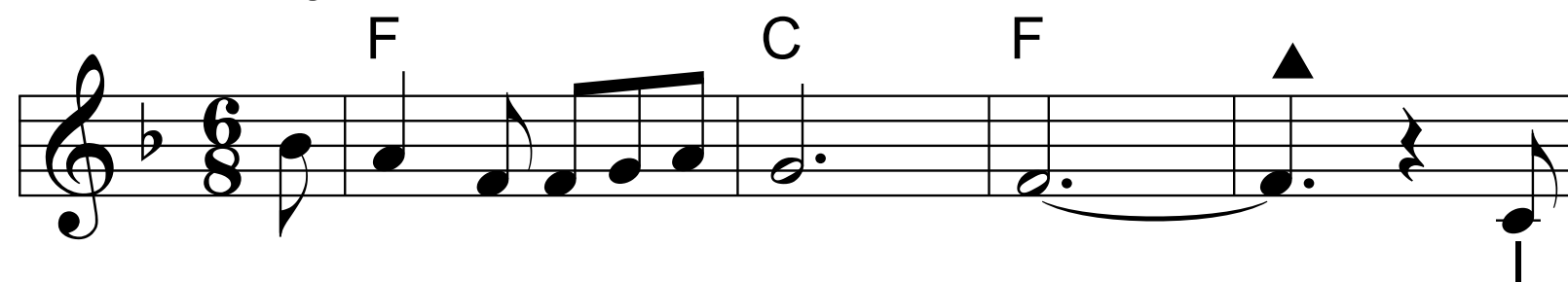


I Saw Three Ships 28

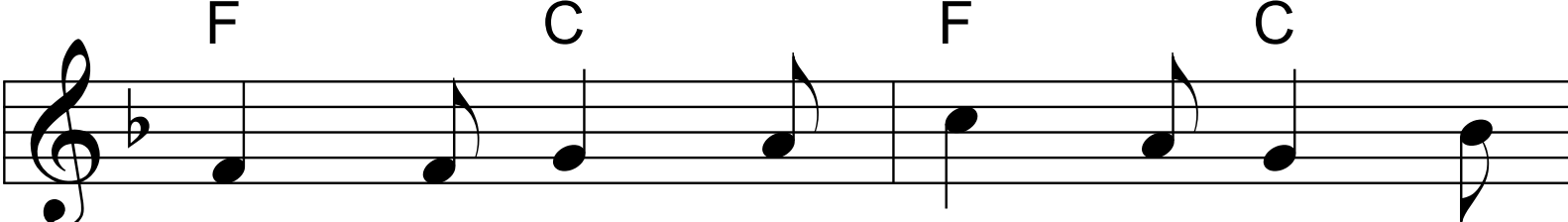
♩ = 94, Schlager 6-8

Traditional



I Saw Three Ships

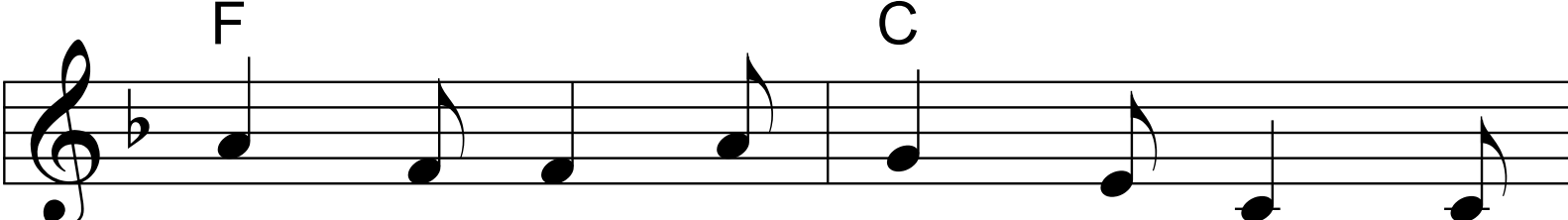
28



what was in those ships all three on

Chords: F, C, F, C

The first line of the musical score is on a single staff in G major (one sharp). It contains four measures. The notes are: G4 (quarter), A4 (quarter), B4 (quarter), C5 (quarter) | G4 (quarter), A4 (quarter), B4 (quarter), C5 (quarter) | G4 (quarter), A4 (quarter), B4 (quarter), C5 (quarter) | G4 (quarter), A4 (quarter), B4 (quarter), C5 (quarter). The lyrics 'what was in those ships all three on' are written below the staff. Chords F and C are written above the first two measures, and F and C are written above the last two measures.



Chrst - mas day, on Christ - mas day? And

Chords: F, C

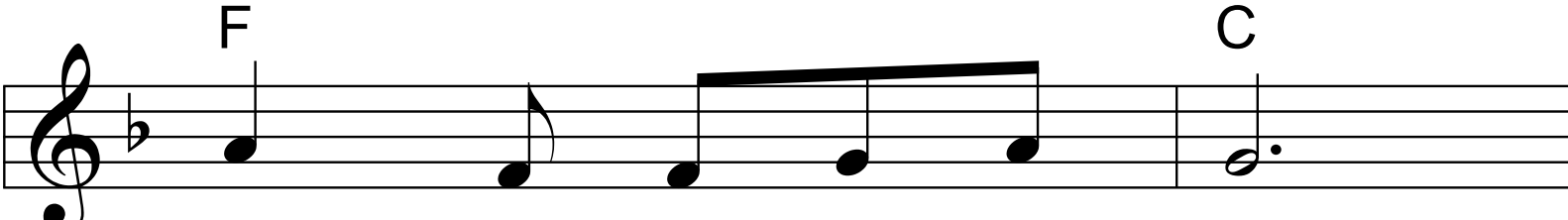
The second line of the musical score is on a single staff in G major. It contains four measures. The notes are: G4 (quarter), A4 (quarter), B4 (quarter), C5 (quarter) | G4 (quarter), A4 (quarter), B4 (quarter), C5 (quarter) | G4 (quarter), A4 (quarter), B4 (quarter), C5 (quarter) | G4 (quarter), A4 (quarter), B4 (quarter), C5 (quarter). The lyrics 'Chrst - mas day, on Christ - mas day? And' are written below the staff. Chords F and C are written above the first two measures, and C is written above the last two measures.



what was in those ships all three on

Chords: F, C, F, C

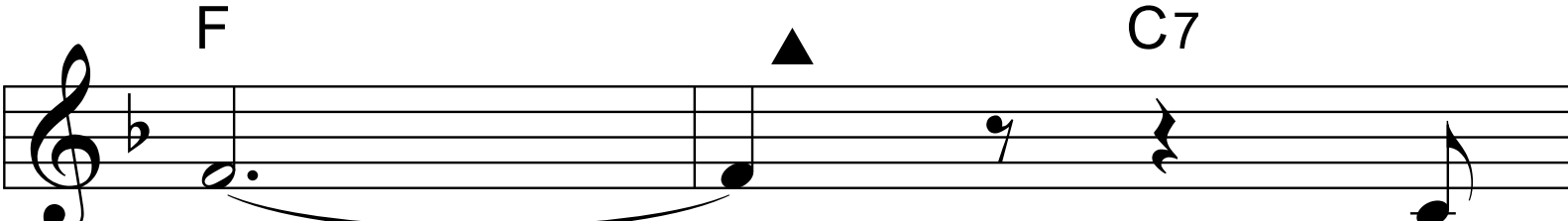
The third line of the musical score is on a single staff in G major. It contains four measures. The notes are: G4 (quarter), A4 (quarter), B4 (quarter), C5 (quarter) | G4 (quarter), A4 (quarter), B4 (quarter), C5 (quarter) | G4 (quarter), A4 (quarter), B4 (quarter), C5 (quarter) | G4 (quarter), A4 (quarter), B4 (quarter), C5 (quarter). The lyrics 'what was in those ships all three on' are written below the staff. Chords F and C are written above the first two measures, and F and C are written above the last two measures.



Christ - mas day in the morn -

Chords: F, C

The fourth line of the musical score is on a single staff in G major. It contains four measures. The notes are: G4 (quarter), A4 (quarter), B4 (quarter), C5 (quarter) | G4 (quarter), A4 (quarter), B4 (quarter), C5 (quarter) | G4 (quarter), A4 (quarter), B4 (quarter), C5 (quarter) | G4 (quarter), A4 (quarter), B4 (quarter), C5 (quarter). The lyrics 'Christ - mas day in the morn -' are written below the staff. Chords F and C are written above the first two measures, and C is written above the last two measures.



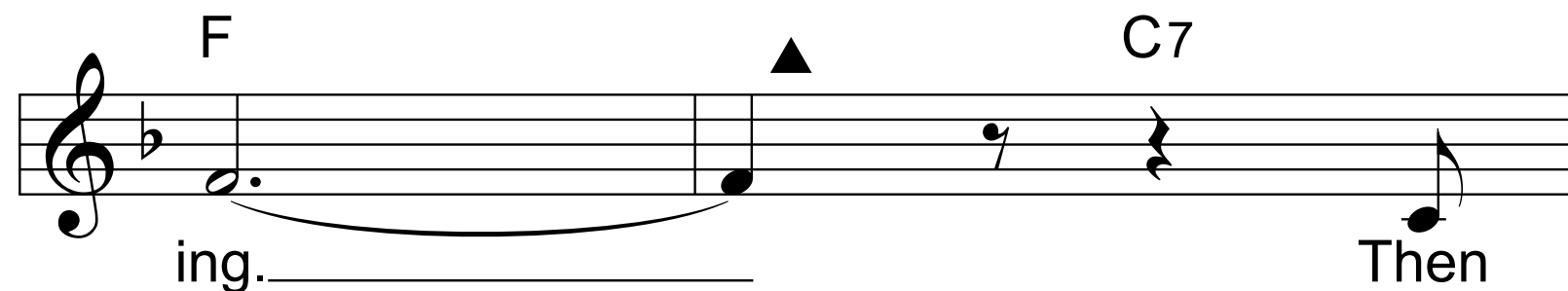
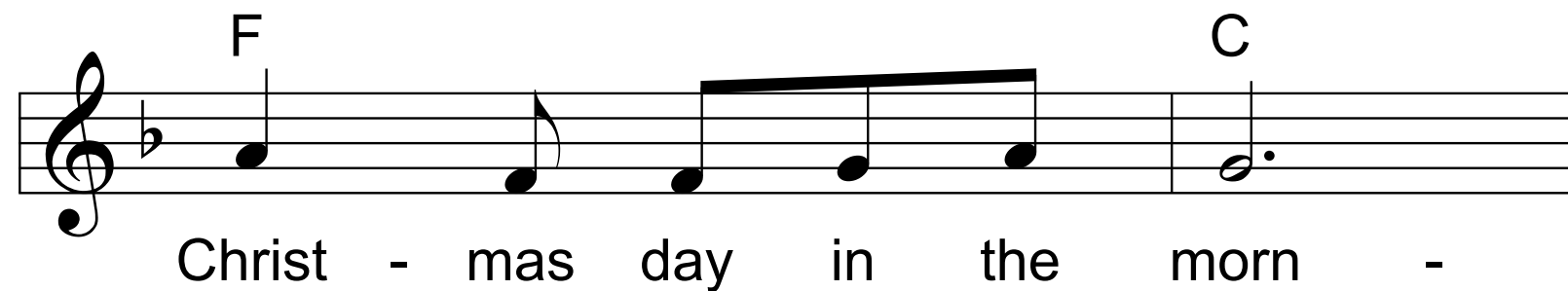
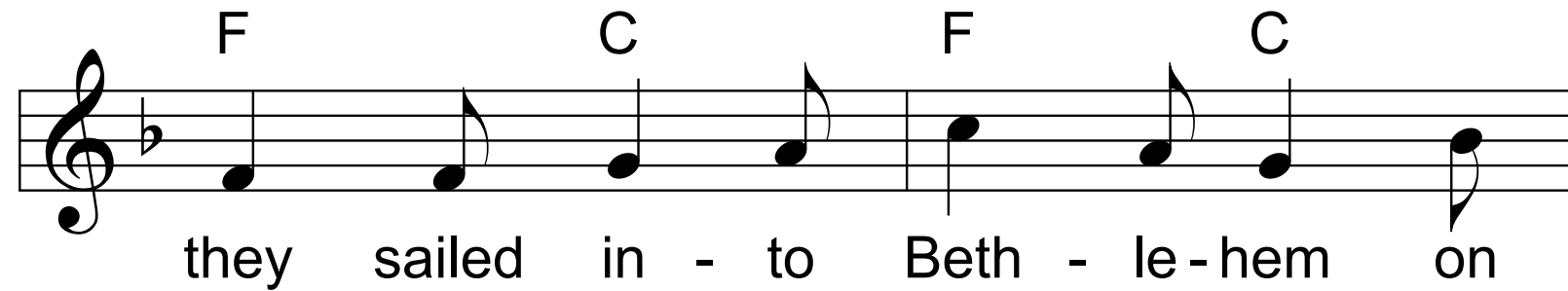
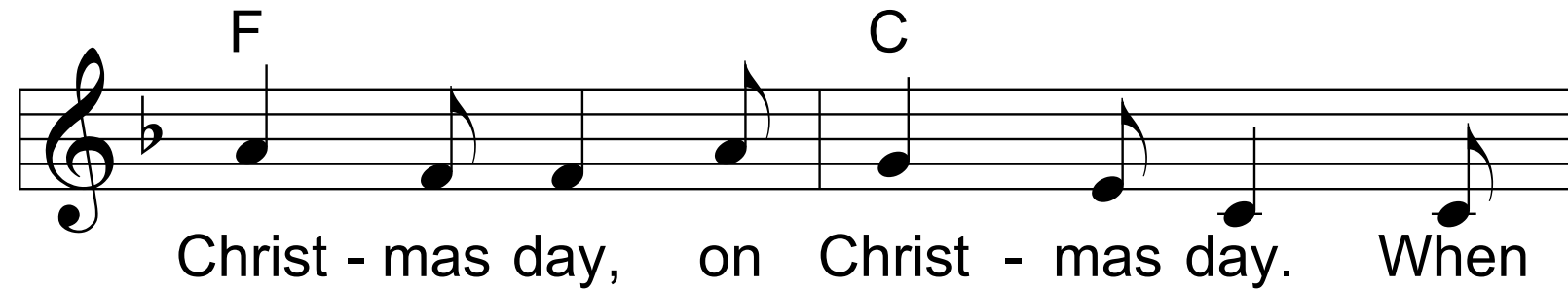
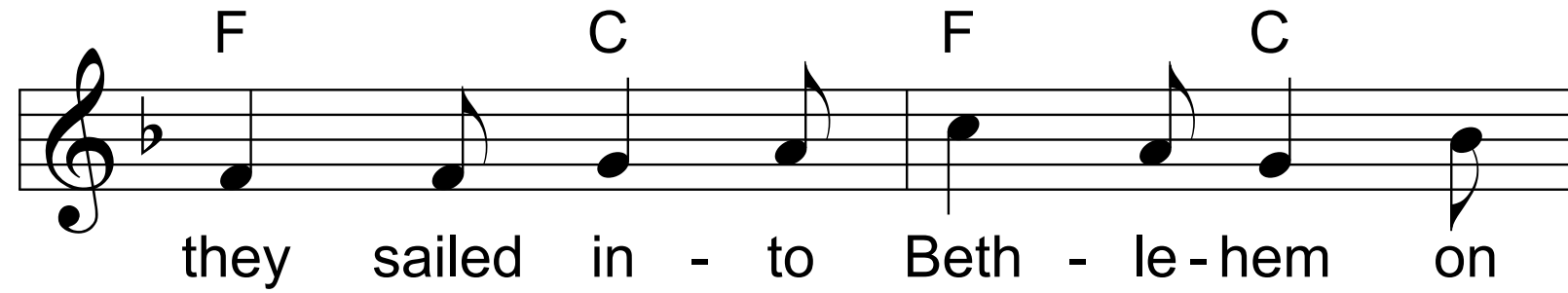
ing? When

Chords: F, C7

The fifth line of the musical score is on a single staff in G major. It contains four measures. The notes are: G4 (quarter), A4 (quarter), B4 (quarter), C5 (quarter) | G4 (quarter), A4 (quarter), B4 (quarter), C5 (quarter) | G4 (quarter), A4 (quarter), B4 (quarter), C5 (quarter) | G4 (quarter), A4 (quarter), B4 (quarter), C5 (quarter). The lyrics 'ing? When' are written below the staff. Chords F and C7 are written above the first two measures, and C7 is written above the last two measures.

I Saw Three Ships

28



I Saw Three Ships

28

